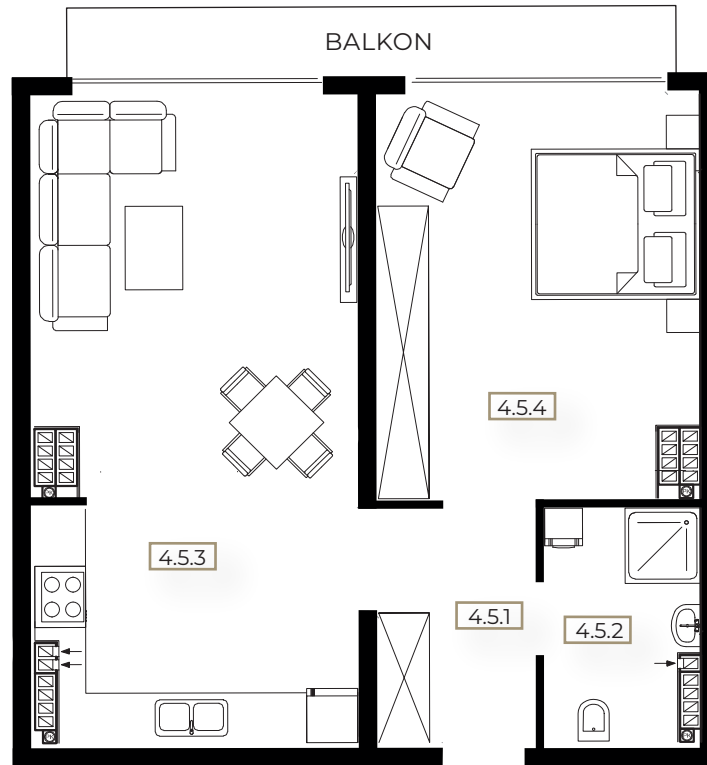


# BIKE·OWE BESKIDY II

## BUDYNEK A



### APARTAMENT A110 | PIĘTRO 4

**4.5.1** KOMUNIKACJA | 6,49 m<sup>2</sup>

**4.5.2** ŁAZIENKA | 5,88 m<sup>2</sup>

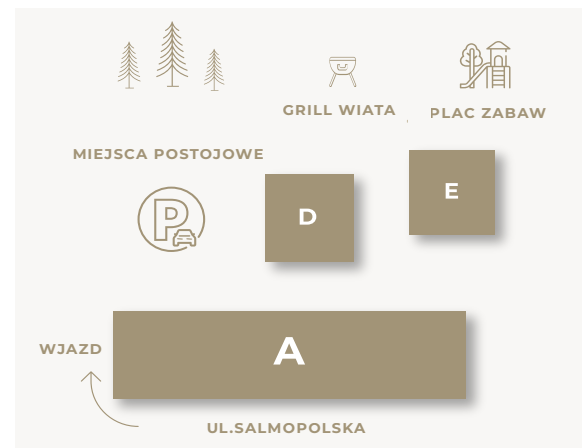
**4.5.3** SALON

Z ANEKSEM KUCHENNYM | 29,73 m<sup>2</sup>

**4.5.4** SYPIALNIA | 18,99 m<sup>2</sup>

**RAZEM 61,09 m<sup>2</sup>**

BALKON | 8,99 m<sup>2</sup>



### RZUT KONDYGNACJI

